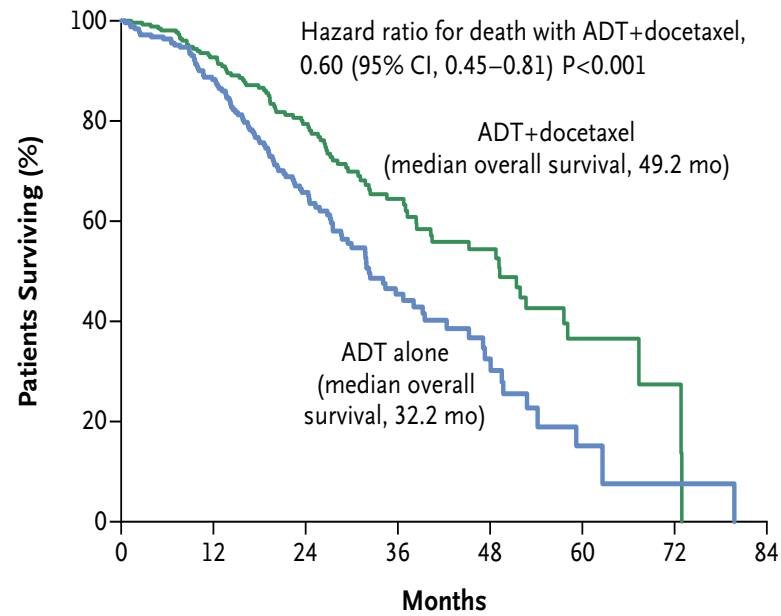


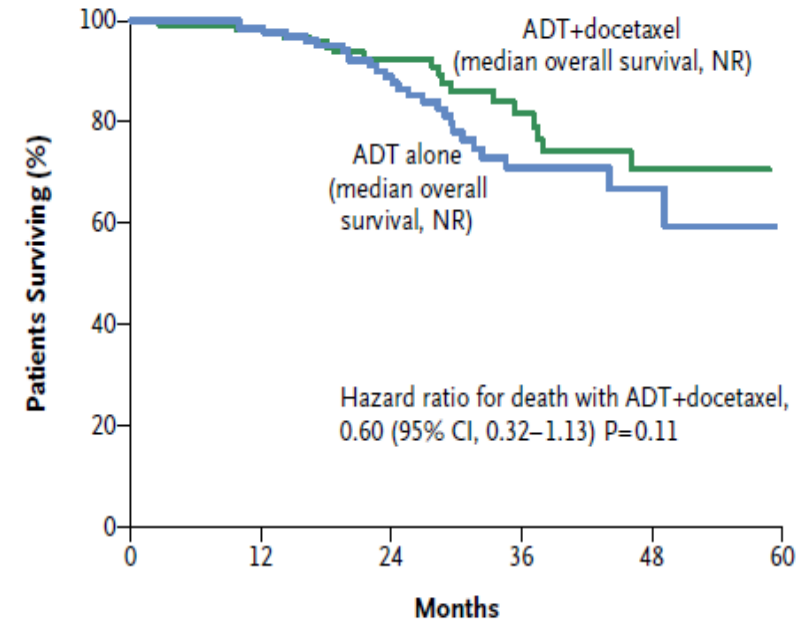
## B Patients with High-Volume Disease



### No. at Risk

ADT+docetaxel	263	213	123	56	31	5	2	0
ADT alone	250	193	92	40	14	3	1	0

## C Patients with Low-Volume Disease



### No. at Risk

ADT+docetaxel	134	120	66	33	15	0
ADT alone	143	125	76	31	13	0